



420W LED Shoebox Fixture

Outdoor Pole/Arm-Mounted Area and Roadway Luminaire

- Built-in Surge Suppressors & Protection •
- Bright • High CRI • High Lumen Output •
- 5-Years / 50,000 Hours Warranty (*) •



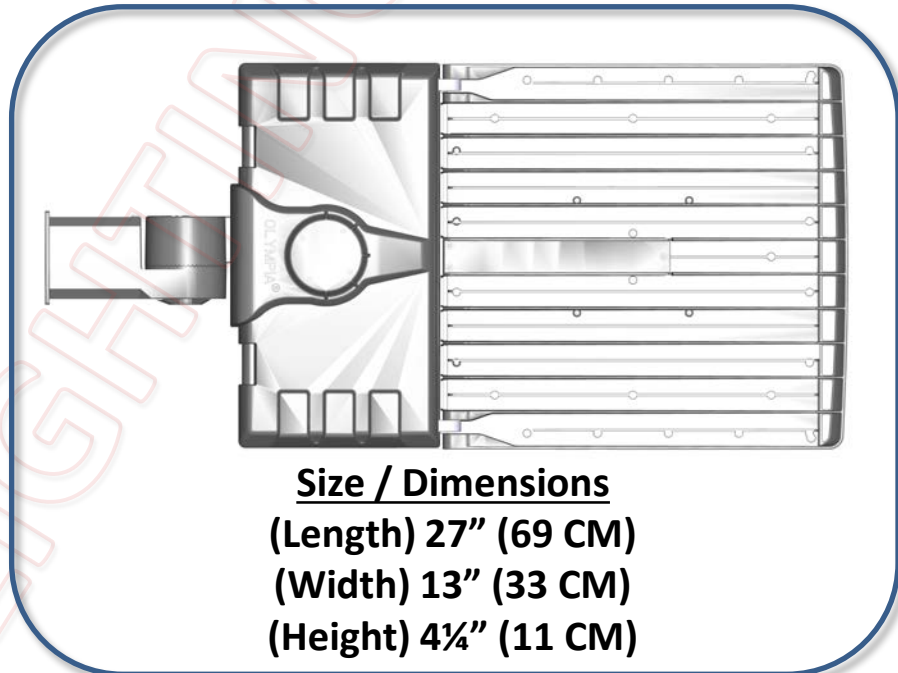
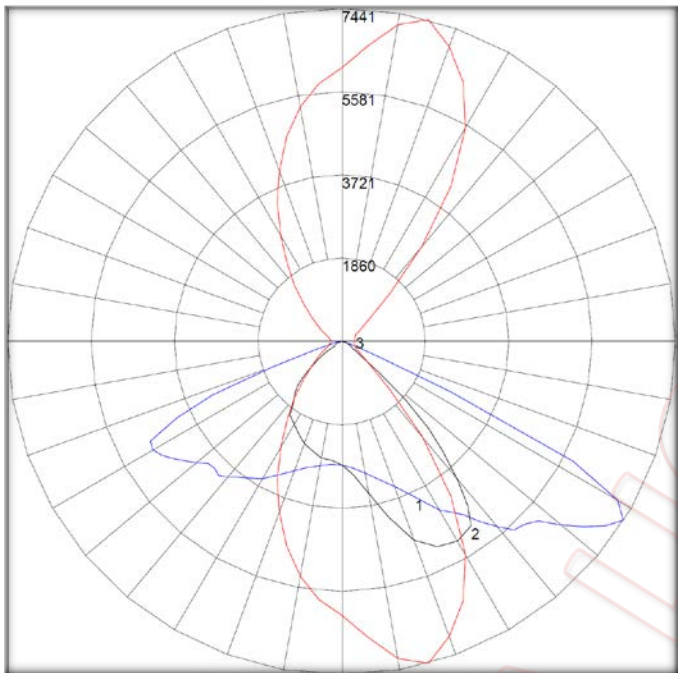
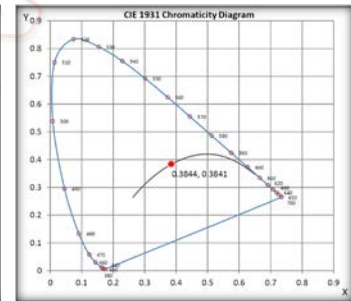
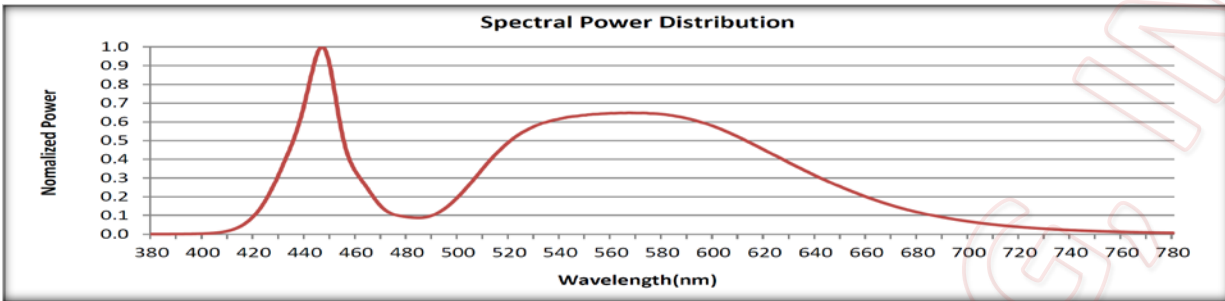
- DesignLights Consortium (DLC) listed (Classification: Premium) •
- Wet location rated and corrosion resistant aluminum housing •

Model	Product	Power	Flux	Equivalent
SBL-420W-50K-480V DLC ID: P6I2F0FX	LED Shoe Box Fixture 420W 5000K 480V	420W Typ.	58,000 Lumens	1,500W Metal Halide Lamp

- "480V": 200-480Vac ~50/60Hz • P.F. > 0.9 • THD 9.3% • Pigtail Cable •
- (*) Rated Life > 50,000 Hrs. (L₇₀ B₅₀) at T_[A] 25°C Max. •
- CCT 5000K (50K) ±10% • CRI ≈ 74 • 138 lm/W •
- Operating Temperature Range -40°C (-40°F) to +50°C (122°F) @ 20%~90% RH •



420W LED Shoebox Fixture



Size / Dimensions
 (Length) 27" (69 CM)
 (Width) 13" (33 CM)
 (Height) 4¼" (11 CM)

Model	Product	Power	Equivalent
SBL-420W-50K-480V	LED Shoebox Luminaire 420W 5000K 480V	420W	1,500W MH/HPS
Input Voltage	Power/Power Factor	Efficacy	Flux
480V: 200-480Vac ~50/60Hz	420W P.F. ≈ 0.99	138 Lumens per Watt	58,000 Lumens
Color Rendering	Color Temperature	Beam Angle	Life
CRI 74	50K: CCT 5000K ±10%	150°x75°	5-Years / 50,000 Hrs (L ₇₀ B ₅₀) T _[A] 25°C Max.



LED Shoebox Fixture Mounting Accessories

"SC": Shorting Cap
"PC" Photo Cell Sensor →

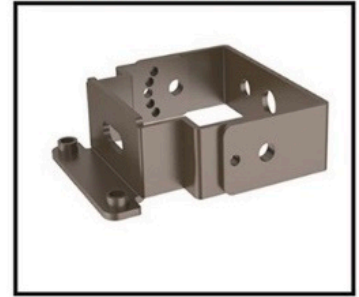
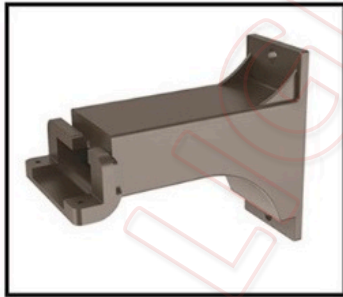
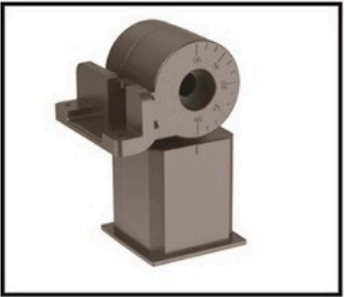


Tenon "ASF":
Adjustable Slip Fitter

Tenon "FST":
Flat Side Tenon

Tenon "RST":
Round Side Tenon

Tenon "ATM":
Adjustable
Trunnion Mount



Mount ▶	ASF	FST	RST	ATM
	Adjustable Slip Fitter	Flat Side Tenon	Round Side Tenon	Adj. Trunnion Mount
Color ▶	BRZ	BLK	SVR	WHT
	Bronze	Black	Silver	White
CCT ▶	22K	30K	40K	50K
±10%	2200K	3000K	4000K	5000K
TYPE ▶	T2	T3	T4	T5
Distribution	Type II	Type III	Type IV	Type V