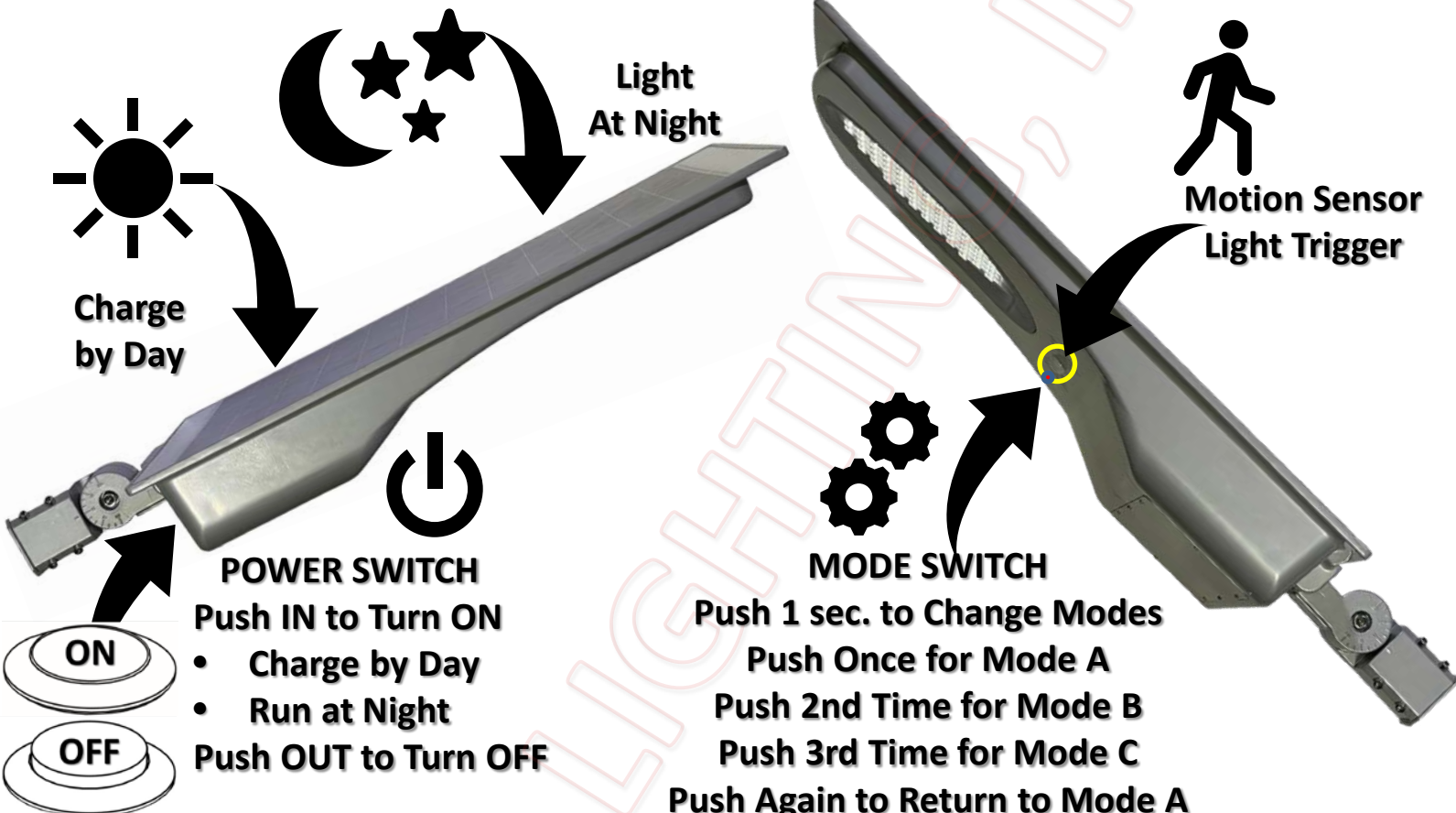




# 50W & 60W Solar LED Street Light

## SLSL-50W & SLSL-60W User Manual



**POWER SWITCH**  
Push IN to Turn ON

- Charge by Day
  - Run at Night
- Push OUT to Turn OFF

**MODE SWITCH**  
Push 1 sec. to Change Modes

- Push Once for Mode A
- Push 2nd Time for Mode B
- Push 3rd Time for Mode C

Push Again to Return to Mode A

<p><b>Dual Function Solar Panel:</b></p> <ul style="list-style-type: none"> <li>• Charge the Built-in Battery by Day</li> <li>• Dusk to Dawn Photo Cell Sensor</li> </ul>	<p><b>MODE A:</b> Full Light for 45 seconds while Motion is detected, thereafter Light at 50% Power when No Motion Sensed</p>
<p><b>Integrated Motion Sensor:</b></p> <ul style="list-style-type: none"> <li>• Sense Body Motion and Triggers Light</li> <li>• Re-Trigger Light when Body in Motion</li> </ul>	<p><b>MODE B:</b> Full Light for 45 seconds while Motion is detected, thereafter No Light (Light Turns OFF when No Motion sensed)</p>
<p><b>Push ON-OFF POWER Switch:</b></p> <ul style="list-style-type: none"> <li>• Push OFF: For Storage and Shipment</li> <li>• Push ON: Charge by Day &amp; Run at Night</li> </ul>	<p><b>MODE C:</b> Light is Always-On, at 50% Power. (Solar Panel is the Photo Cell Sensor for Dusk to Dawn operation)</p>
<p><b>MODE SW – Push to Set Operation Modes:</b></p> <ul style="list-style-type: none"> <li>• Starts in MODE A when Power SW is ON</li> <li>• Push Switch for 1 sec. to Change Modes</li> </ul>	<p><b>MODE D:</b> No Light (Shutdown). Use to Charge Battery during day. [3 sec. Push &amp; Hold Mode Switch]</p>